

Asia – North Europe Services in a Nutshell

In 2021 there are 23 services on Asia – North Europe trade, 1 service more than 2020. Among them, 18 services are run by alliances and 5 services are run by non-alliance.

Asia-NEU services have many ports on a route. At origin side, they can call from Busan all the way down to Southeast Asia on a single service. Almost all services will cover Central China and South China. For example, among 18 alliance services, 11 services call Shanghai, Ningbo, and Yantian, and 5 services call Shanghai/Ningbo or Yantian. At destination side, one or two ports in Netherlands or UK or Germany or France or Belgium will be prioritized.

We could group Asia-NEU services by origin area or by destination area, but it is more interesting to group them by alliance to show different character.

Below are four groups by alliance and non-alliance.

- ✚ 2M alliance services with dynamic destination callings (6 services) ;
- ✚ THE alliance services with dynamic origin callings (5 services) ;
- ✚ Ocean alliance services with competitive transit time (7 services) ;
- ✚ Non-alliance services from India Subcontinent and Middle East (5 services) .

2M alliance services with dynamic destination callings

All six services from 2M alliance call Central China and South China plus North China or Busan. There isn't much variety on origin port arrangements. However, at destination side, each service would put one or two ports in Netherlands or UK or Germany or Belgium as priority. 2M alliance will call some unique ports such as Aarhus, Gothenburg, Gdansk, and etc.

MSK(AE5)HSD(NERA5)MSC(ALBATROS)HPL(FE7)

CNDAL-CNTXG-KRPUS-CNNGB-CNSHA-MYTPP-NLRTM-DEBHN-SEGOT-DKAAR-DEWIL

Fast service to Netherlands and Germany; direct call at Dalian/Tianjin; direct call at Gothenburg/Aarhus; fastest transit time from Shanghai/Busan/Tianjin to Rotterdam. 2M alliance service, MSK/MSC vessels, average capacity at 19300 TEU.

MSK(AE55)MSC(GRIFFIN)

CNSHA-CNNGB-CNYTN-SGSIN-MYTPP-EGPSD-NLRTM-BEANT-GBFEL

Overall transit time is slow; 2M alliance service, MSK/MSC vessels, average capacity at 15700 TEU.

MSK(AE1)HSD(NERA1)MSC(SHOGUN)

JPYOK-CNNGB-CNSHA-CNXMN-MYTPP-LKCMC-GBFEL-NLRTM-DEBHN

Fast service to UK. Unique call at Yokohama; fastest transit time from Tanjung Pelepas / Colombo to UK; 2M alliance service, MSK/MSC vessels, average capacity at 16200 TEU.

MSK(AE7)HSD(NERA4)MSC(CONDOR)

CNNGB-CNSHA-CNSA-CNYTN-MYTPP-LKCMC-MAPT-GBFEL-DEHAM-BEANT-GBLGP-FRLEH

Fast service to UK; fastest transit time from Colombo to Hamburg / Le Havre; 2M alliance service, MSK/MSC vessels, average capacity at 18000 TEU.

MSK(AE6)HSD(NERA3)MSC(LION)

KRPUS-CNNGB-CNSHA-CNYTN-MYTPP-PTSIE-BEANT-FRLEH-GBFEL

Fast service to Belgium and France. Fastest transit time from Busan /Ningbo /Tanjung Pelepas to Antwerp; 2M alliance service, MSK/MSC vessels, average capacity at 16000 TEU.

MSK(AE10)HSD(NERA6)MSC(SILK)HPL(FE8)

CNTXG-CNTAO-KRKWA-CNNGB-CNSHA-CNYTN-MYTPP-DEBHN-PLGDN

Fast service to Germany; only call Bremerhaven and Gdansk at destination. Fastest transit time from Shanghai /Shenzhen to Germany; 2M alliance service, all MSK vessels, average capacity at 18700 TEU.

THE alliance services with dynamic origin callings

Five services from THE alliance doesn't have much change on destination port arrangement, with four services call Rotterdam and Hamburg first and only one service calls UK first. However, at origin side, THE alliance has services focusing on either Japan or Southeast Asia or South China.

HPL(FP1)ONE(FP1)YML(FP1)HMM(FP1)

JPSMZ-JPUKB-JPNGO-JPTYO-SGSIN-NLRMT-DEHAM-FRLEH

The only service from Shimizu/ Kobe/ Nagoya/ Tokyo to North Europe. Transit time is fast with the only stop at Singapore. Fastest transit time from Singapore to Rotterdam and Hamburg. THE alliance service, all ONE vessels, average capacity at 8900 TEU.

HPL(FP2)ONE(FP2)YML(FP2)HMM(FP2)

HKHKG-THLCH-VNVUT-SGSIN-LKCMB-NLRMT-DEHAM-BEANT-GBLGP

Dedicated Southeast Asia to North Europe service; The only service from Thailand to North Europe ; Fastest transit time from Vung Tau/Colombo to Rotterdam; THE alliance service, average capacity at 14000 TEU.

HPL(FE2)ONE(FE2)YML(FE2)HMM(FE2)

KRPUS-CNSHA-CNNGB-CNNSA-CNYTN-SGSIN-MAPT-GBSOU-FRLEH-DEHAM-NLRMT

Calling all the way from Busan to major China ports to Singapore; transit time to Southampton is fast. THE alliance service, ONE/HPL/HMM vessels, average capacity at 19700 TEU.

HPL(FE3)ONE(FE3)YML(FE3)HMM(FE3)

HKHKG-CNXMN-TWKHH-CNYTN-NLRMT-DEHAM-BEANT-GBSOU

Become a fast service from South China and Taiwan to North Europe after cancel calling Ningbo and Shanghai, overall transit time is good. Fastest transit time from Hong Kong/ Xiamen/ Kaohsiung to Rotterdam; THE alliance service, ONE/HPL/HMM/YML vessels, average capacity at 13700 TEU.

HPL(FE4)ONE(FE4)YML(FE4)HMM(FE4)

CNTAO-KRPUS-CNNGB-CNSHA-CNYTN-ESALG-NLRMT-DEHAM-BEANT

Fast service to Netherlands and Germany; fast transit time from Busan to Germany. THE alliance service, HMM/ONE vessels, average capacity at 20400 TEU.

Ocean alliance services with competitive transit time

Among seven services from Ocean alliance, five will call Shanghai, Ningbo, and Yantian. OA also call many other origin ports. At destination side, each service will have a priority

calling France or Netherlands or UK or Germany or Belgium. Almost every service will have the fastest transit time in the market for certain portpairs.

CMA(FAL1)COSCO(AEU2)OOCL(LL4)EMC(FAL1)

CNTXG-KRPUS-CNNGB-CNSHA-CNYTN-SGSIN-FRLEH-FRDUN-DEHAM-NLRTM

Fast service for France and Germany. Unique call at Dunkerque; fastest transit time from Busan /Ningbo /Shanghai /Yantian /Singapore to Le Harve; Ocean alliance service, all CMA vessels, average capacity at 22100 TEU.

CMA(FAL3)COSCO(AEU6)OOCL(LL5)EMC(FAL3)

CNTAO-CNNGB-CNSHA-CNYTN-SGSIN-MAPT-M-NLRTM-GBSOU-BEANT-FRLEH

Fast service to UK; Ocean alliance service, all CMA vessels, average capacity at 17400 TEU.

CMA(FAL6)COSCO(AEU5)OOCL(LL6)EMC(CEM)

TWKHH-CNTAO-CNSHA-CNNGB-TWTPE-CNYTN-MYTPP-NLRTM-GBFEL-DEHAM

Fast service to Netherlands and UK; unique calling at Taipei; fastest transit time from Qingdao/Ningbo/Yantian to Rotterdam; Ocean alliance service, all EMC vessels, average capacity at 20700 TEU.

CMA(FAL2)COSCO(AEU3)OOCL(LL2)EMC(NE3)

CNTXG-CNDAL-CNTAO-CNSHA-CNNGB-SGSIN-GRPIR-NLRTM-DEHAM-BEANT

Cover North China three ports; fast service to Germany and Netherlands. Fastest transit time from Tianjin/Qingdao/Dalian to Germany and Netherlands; fastest transit time from Ningbo to Germany; Ocean alliance service, all COSCO vessels, average capacity at 20000 TEU.

CMA(FAL7)COSCO(AEU7)OOCL(LL3)EMC(NE7)

CNXMN-CNNSA-HKHKG-CNYTN-VNVUT-MYPKG-GRPIR-DEHAM-NLRTM-BEZEE-GBFEL

Direct call at Port Kelang; direct call at Zeebrugge; fastest transit time from Xiamen/ Hong Kong/ Vung Tau to Germany; Ocean alliance service, all COSCO vessels, average capacity at 14900 TEU.

CMA(FAL5)COSCO(AEU1)OOCL(LL1)EMC(NE1)

CNSHA-CNNGB-CNXMN-CNYTN-SGSIN-GBFEL-BEZEE-PLGDN-DEWIL

Fast service to UK. Fastest transit time from Ningbo/ Shanghai/ Xiamen/ Shenzhen/ Singapore to UK. Direct call at Gdansk and Zeebrugge; Ocean alliance service, OOCL/Cosco vessels, average capacity at 20700 TEU.

CMA(FAL8)COSCO(AEU9)OOCL(LL7)EMC(CES)

CNTXG-CNNGB-CNSHA-CNYTN-SGSIN-LKCMB-GRPIR-BEANT-DEHAM-NLRTM

Fast service to Belgium; drop Kaohsiung and add Tianjin; fastest transit time from Tanjin/Ningbo/ Shanghai/ Yantian/ Singapore/ Colombo to Antwerp. Ocean alliance service, all EMC vessels, average capacity at 14600 TEU.

Non-alliance services from India Subcontinent and Middle East

CMA(EPIC2)COSCO(EPIC2)HPL(10S)ONE(10S)OOCL(IP2)

AEJEA-PKKHI-INNSA-INHZR-INMUN-SAJED-MAPTM-NLRTM-DEHAM-GBLGP-BEANT

Dedicated service for Indian subcontinent and Middle East. Serve many north Europe ports. Non-alliance service, HPL/ONE vessels, average capacity at 8600 TEU.

CMA(EPIC1)COSCO(EPIC1)HPL(102)OOCL(IP1)ONE(102)

AEJEA-AEAUH-PKBQM-INNSA-INMUN-SAJED-MAPTM-GBSOU-NLRTM-DEBHN-BEANT-FRLEH

More choice on Indian subcontinent and Middle East ports; very fast transit time to North Europe. Non-alliance service, CMA/COSCO/OOCL vessels, average capacity at 8200 TEU.

MSC(HIMALAYA)

LKCMB-INNSA-INMUN-SAKAC-GBFEL-NLRTM-DEHAM-BEANT

Dedicated service for South Asia and Middle East to North Europe; overall transit time is slow; Independently run by MSC, average vessel capacity at 12200 TEU.

COSCO(1EX)HPL(1EX)ONE(103)OOCL(IP3)YML(1EX)

INVIG-INKRI-INMAA-INTUT-LKCMB-INCOK-EGDAM-GRPIR-NLRTM-GBLGP-DEHAM-BEANT-FRLEH

The only service from East and South India to North Europe. Non-alliance service, HPL/YML/ONE/COSCO/OOCL, average capacity at 6300 TEU.

MSK(ME7)

INMAA-LKCMB-OMSL-ESALG-GBFEL-NLRTM-DEBHN

Dedicated service for South Asia and Middle East to North Europe; Overall transit time is fast; Independently run by MSK, average vessel capacity at 6100 TEU.

Port Calling Density

Below table shows origin port calling density on Asia – NEU trade. Both Shanghai and Ningbo rank the first with 14 services; Yantian ranks the second with 13 services. Singapore and Tanjung Pelepas are frequently called as Southeast Asia cargo hubs. Singapore is mainly used by Ocean and THE alliances while Tanjung Pelepas is used by 2M alliance. Colombo is also hot being cargo hub for South Asia cargo. Busan in Korea only has 5 services, which is not as hot as it is in other trades

Ocean alliance has the most port callings, followed by 2M alliance. Both alliances call Shanghai / Ningbo / Yantian very intensively. THE alliance is not so active in term of port callings, but it has unique callings in Japan and Southeast Asia.

Origin Port	2M	OCEAN	THE	OTHER	Total
Shanghai, CN	6	6	2		14
Ningbo, CN	6	6	2		14
Yantian, CN	4	6	3		13
Singapore, SG	1	5	3		9
Tanjung Pelepas, MY	6	1			7
Colombo, LK	2	1	1	3	7
Busan, KR	2	1	2		5
Tianjin, CN	2	3			5
Qingdao, CN	1	3	1		5
Xiamen, CN	1	2	1		4
Hongkong, CN		1	2		3
Nansha, CN	1	1	1		3
Nhava Sheva, IN				3	3
Mundra, IN				3	3
Dalian, CN	1	1			2
Kaohsiung, TW		1	1		2
Vung Tau, VN		1	1		2
Jeddah, SA				2	2
Jebel Ali, AE				2	2
Chennai, IN				2	2
Kwangyang, KR	1				1
Tokyo, JP			1		1
Nagoya, JP			1		1
Shimizu, JP			1		1
Kobe, JP			1		1
Yokohama, JP	1				1
Taipei, TW		1			1
Laem Chabang, TH			1		1
Port Kelang, MY		1			1
Karachi, PK				1	1
Bin Qasim, PK				1	1
Tuticorin, IN				1	1
Hazira, IN				1	1
Vizagapatnam, IN				1	1
Cochin, IN				1	1
Krishnapatnam, IN				1	1
King Abdullah, SA				1	1
Abu Dhabi, AE				1	1
Salalah, OM				1	1
Total	35	41	25	25	126

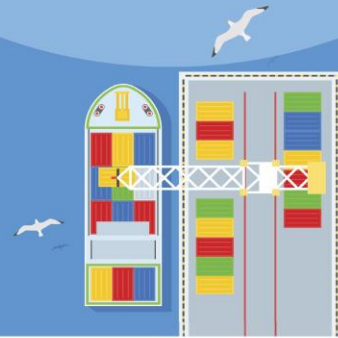
Below table shows destination port calling intensity. Rotterdam, UK base ports, and Germany base ports have the most callings. Antwerp and Le Havre are also popular. They are the base ports for North Europe. Dunderque in France, Gdank in Poland, Aarhus in Denmark, and Gothenburg in Sweden are unique with only one or two services.

Destination Port	2M	OCEAN	THE	OTHER	Total
Rotterdam, NL	3	6	5	5	19
Hamburg, DE	1	5	5	3	14
Antwerp, BE	3	3	3	4	13
Felixstowe, GB	4	3		2	9
Le Havre, FR	2	2	2	2	8
Tangier Med, MA	1	1	1	2	5
Bremerhaven, DE	3			2	5
Southampton, GB		1	2	1	4
London Gateway Po	1		1	2	4
Piraeus, GR		3		1	4
Zeebrugge, BE		2			2
Wilhelmshaven, DE	1	1			2
Gdansk, PL	1	1			2
Algeciras, ES			1	1	2
Aarhus, DK	1				1
Dunkerque, FR		1			1
Gothenburg, SE	1				1
Sines, PT	1				1
Total	23	29	20	25	97

Appendix

Asia - North Europe Ocean Services

By ezocean



Alliance	Carrier (ServiceCode)	Operator (Vessel#)	Capacity
2M alliance services with dynamic destination callings			
2M	MSK(AE5)HSD(NERA5)MSC(ALBATROS)HPL(FE7)	MSK(12)MSC(1)	19485
2M	MSK(AE55)MSC(GRIFFIN)	MSC(8)MSK(3)	15704
2M	MSK(AE1)HSD(NERA1)MSC(SHOGUN)	MSC(7)MSK(4)	16293
2M	MSK(AE7)HSD(NERA4)MSC(CONDOR)	MSK(9)MSC(3)	18090
2M	MSK(AE6)HSD(NERA3)MSC(LION)	MSC(10)MSK(1)	16084
2M	MSK(AE10)HSD(NERA6)MSC(SILK)HPL(FE8)	MSK(13)	18625
THE alliance services with dynamic origin callings			
THE	HPL(FP1)ONE(FP1)YML(FP1)HMM(FP1)	ONE(15)	8996
THE	HPL(FP2)ONE(FP2)YML(FP2)HMM(FP2)	ONE(13)YML(5)	14018
THE	HPL(FE2)ONE(FE2)YML(FE2)HMM(FE2)	HPL(5)HMM(2)ONE(5)	19778
THE	HPL(FE3)ONE(FE3)YML(FE3)HMM(FE3)	HMM(5)HPL(4)ONE(1)YML(1)	13702
THE	HPL(FE4)ONE(FE4)YML(FE4)HMM(FE4)	HMM(11)ONE(1)	20447
Ocean alliance services with competitive transit time			
OCEAN	CMA(FAL1)COSCO(AEU2)OOCL(LL4)EMC(FAL1)	CMA(13)	22168
OCEAN	CMA(FAL3)COSCO(AEU6)OOCL(LL5)EMC(FAL3)	CMA(11)	17506
OCEAN	CMA(FAL6)COSCO(AEU5)OOCL(LL6)EMC(CEM)	EMC(11)	20758
OCEAN	CMA(FAL2)COSCO(AEU3)OOCL(LL2)EMC(NE3)	COSCO(11)	20022
OCEAN	CMA(FAL7)COSCO(AEU7)OOCL(LL3)EMC(NE7)	COSCO(10)	14951
OCEAN	CMA(FAL5)COSCO(AEU1)OOCL(LL1)EMC(NE1)	OOCL(6)COSCO(5)	20721
OCEAN	CMA(FAL8)COSCO(AEU9)OOCL(LL7)EMC(CES)	EMC(11)	14619
Non-alliance services from Indian Subcontinent and Middle East			
OTHER	CMA(EPIC2)COSCO(EPIC2)HPL(10S)ONE(10S)OOCL(IP2)	HPL(7)ONE(1)	8661
OTHER	CMA(EPIC1)COSCO(EPIC1)HPL(102)OOCL(IP1)ONE(102)	CMA(5)COSCO(2)OOCL(1)	8212
OTHER	MSC(HIMALAYA)	MSC(9)	12258
OTHER	COSCO(1EX)HPL(1EX)ONE(103)OOCL(IP3)YML(1EX)	HPL(4)COSCO(2)OOCL(1)ONE(1)YML(1)	6223
OTHER	MSK(ME7)	MSK(8)	6102