

Cancelled & extra sailings on TP/AE trade

Data up to January 30, 2023 shows that, in January & February (The first port arrival date in week 1~9), there are in total 242 cancelled sailings on Trans Pacific & Asia Europe trade. Trade-wise, there are 114 cancelled sailings on TP West Coast (TPWC), 68 on TP East Coast (TPEC), 38 on North Europe (NEU), and 22 on Mediterranean (MED); Alliance-wise, there are 88 cancelled sailings on THE, 62 on OCEAN, 41 on 2M, and 51 on others. Chinese New Year day was on Jan 22nd, 2023, and carriers arranged many blank sailings on week 4 & 6. Besides the CNY holiday, congested ports are no longer a reason for canceled sailings but low cargo demand is .

■ Compared to last month's statistics

Compared to cancelled sailings in December & January summarized on December 26, 2022, the number of cancelled sailings in January & February is increased from 189 to 242.

Trade-wise, cancelled sailings increased from 85 to 114 on TPWC, and increased from 48 to 68 on TPEC, maintained same on NEU, and increased from 18 to 22 on MED.

Cancelled Sailing Trade	2022-12-26 Stats for Dec & Jan	2023-01-30 Stats for Jan & Feb	Variance
Asia - TPWC	85	114	29
Asia - TPEC	48	68	20
Asia - NEU	38	38	0
Asia - MED	18	22	4
Total	189	242	53

Alliance-wise, cancelled sailings decreased from 93 to 88 for THE alliance, increased from 39 to 62 for Ocean alliance, increased from 19 to 41 for 2M alliance, and increased from 38 to 51 for non-alliance.

Cancelled Sailing Alliance	2022-12-26 Stats for Dec & Jan	2023-01-30 Stats for Jan & Feb	Variance
THE	93	88	-5
Ocean	39	62	23
2M	19	41	22
Other	38	51	13
Total	189	242	53

■ **Cancelled sailings in January only**

If we look at January data alone, cancelled sailings within week 1~5 have increased by 89 from last month's stats. More than half of cancelled sailings in January were announced in January.

By trade

Cancelled Sailing Trade	2022-12-26 Stats for Jan	2023-1-30 Stats for Jan	Variance
Asia - TPWC	35	83	48
Asia - TPEC	29	51	22
Asia - NEU	14	26	12
Asia - MED	9	16	7
Total	87	176	89

By Alliance

Cancelled Sailing Alliance	2022-12-26 Stats for Jan	2023-1-30 Stats for Jan	Variance
THE	44	53	9
Ocean	12	51	39
2M	9	30	21
Other	22	42	20
Total	87	176	89

■ **Planned sailings Year-on-Year comparison**

If we compare planned sailings in January & February between this year (2023) and last year (2022), the number of planned sailings is increased from 989 to 1033.

Trade-wise, planned sailings are increasing on all trades except TPWC which has a decrease by 57. Alliance-wise, the biggest increase is from Ocean alliance.

By trade

Planned Sailing Trade	2022-1-21 Stats for Jan & Feb	2023-1-30 Stats for Jan & Feb	Variance
Asia - TPWC	424	367	-57
Asia - TPEC	246	279	33
Asia - NEU	190	216	26
Asia - MED	129	171	42
Total	989	1033	44

By Alliance

Planned Sailing Alliance	2022-1-21 Stats for Jan & Feb	2023-1-30 Stats for Jan & Feb	Variance
THE	193	216	23
Ocean	254	288	34
2M	191	180	-11
Other	351	349	-2
Total	989	1033	44

■ **Cancelled sailings Year-on-Year comparison**

If we compare cancelled sailings in January & February between this year (2023) and last year (2022), planned sailings this year are increasing, cancelled sailings and cancel ratio are decreasing.

Trade-wise, cancel ratio decreased from 39% to 31% on TPWC, decreased from 20% to 18% on NEU. Cancel ratio increased from 15% to 24% on TPEC, increased from 12% to 13% on MED.

Alliance-wise, THE cancel ratio increased by 4% from last year.

By Trade

Trade	2022-1-21 Stats			2023-1-30 Stats		
	Planned Sailing	Cancelled Sailing	Ratio	Planned Sailing	Cancelled Sailing	Ratio
Asia - TPWC	424	164	39%	367	114	31%
Asia - TPEC	246	38	15%	279	68	24%
Asia - NEU	190	38	20%	216	38	18%
Asia - MED	129	15	12%	171	22	13%
Total	989	255	26%	1033	242	23%

By Alliance

Alliance	2022-1-21 Stats			2023-1-30 Stats		
	Planned Sailing	Cancelled Sailing	Ratio	Planned Sailing	Cancelled Sailing	Ratio
THE	193	71	37%	216	88	41%
Ocean	254	63	25%	288	62	22%
2M	191	51	27%	180	41	23%
Other	351	70	20%	349	51	15%
Total	989	255	26%	1033	242	23%

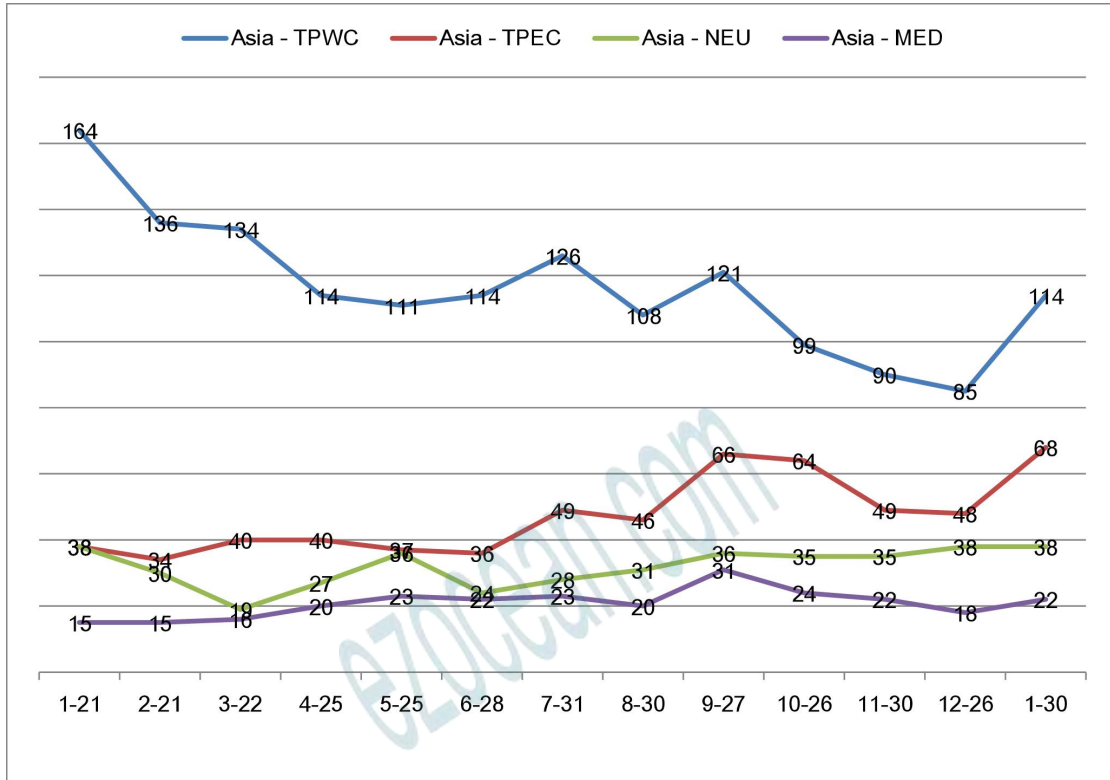
■ The yearly trend of cancelled sailings

EZOCEAN team has been recording cancelled sailings since 2020 September. We always sum up cancelled sailings within nine weeks to see the trend from the perspective of trade or alliance.

Below table shows thirteen cancelled sailing statistics by trade.

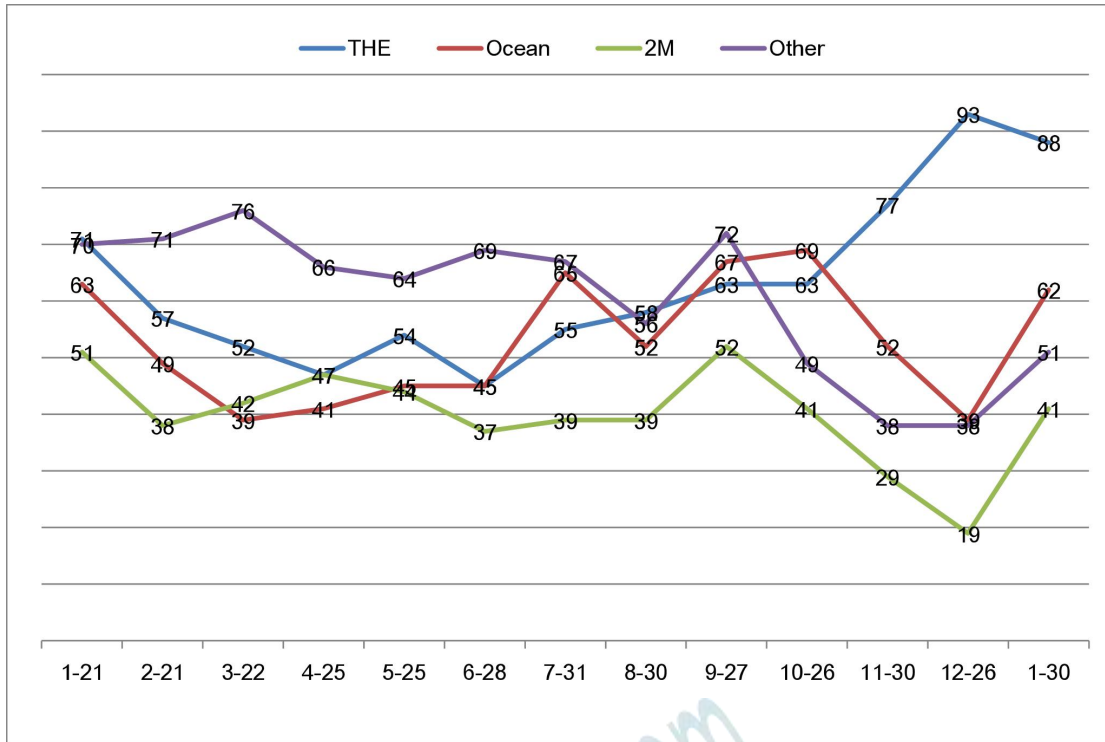
Hunan EZOcean Data Processing Company

Trade	1-21	2-21	3-22	4-25	5-25	6-28	7-31	8-30	9-27	10-26	11-30	12-26	1-30
Asia - TPWC	164	136	134	114	111	114	126	108	121	99	90	85	114
Asia - TPEC	38	34	40	40	37	36	49	46	66	64	49	48	68
Asia - NEU	38	30	19	27	36	24	28	31	36	35	35	38	38
Asia - MED	15	15	16	20	23	22	23	20	31	24	22	18	22
Total	255	215	209	201	207	196	226	205	254	222	196	189	242



Below table shows thirteen cancelled sailing statistics by alliance.

Alliance	1-21	2-21	3-22	4-25	5-25	6-28	7-31	8-30	9-27	10-26	11-30	12-26	1-30
THE	71	57	52	47	54	45	55	58	63	63	77	93	88
Ocean	63	49	39	41	45	45	65	52	67	69	52	39	62
2M	51	38	42	47	44	37	39	39	52	41	29	19	41
Other	70	71	76	66	64	69	67	56	72	49	38	38	51
Total	255	215	209	201	207	196	226	205	254	222	196	189	242



■ Extra sailings

Except cancelled sailings, there is one extra sailing from non-alliance services.

WK	Trade	Carrier	PortRotation	Vessel/Voyage
1	MED	MSK	CNNGB-CNSHA-CNNSA-EGPSD-MAPTM	GSL CHRISTEN/301W

■ Capacity within nine weeks since August 2021

We summed up capacity within nine weeks and below table shows statistics from August 2022.

- ✧ Utilization ratio in September 2022 was decreased from 83% to 79%.
- ✧ Utilization ratio in October 2022 was increased from 79% to 80%.
- ✧ Utilization ratio in November 2022 was increased from 80% to 82%.

- ✧ Utilization ratio in December 2022 was maintained at 82%.
- ✧ Utilization ratio in January 2023 was quickly dropped from 82% to 77%, and this is the lowest stats up to now.

Trade	Planned Capacity	Utilized Capacity	Ratio	Variance
Jan 2023 Statistics		Nine weeks' Capacity in TEU		
Asia to TPWC	3258297	2270029	70%	-988268
Asia to TPEC	2431940	1807688	74%	-624252
Asia to NEU	3351905	2711864	81%	-640041
Asia to MED	1879039	1616879	86%	-262160
Total	10921181	8406460	77%	-2514721
Dec 2022 Statistics				
Asia to TPWC	3237921	2491846	77%	-746075
Asia to TPEC	2495169	2064567	83%	-430602
Asia to NEU	3346553	2751534	82%	-595019
Asia to MED	1798145	1579304	88%	-218841
Total	10877788	8887251	82%	-1990537
Nov 2022 Statistics				
Asia to TPWC	3350107	2556629	76%	-793478
Asia to TPEC	2546561	2125277	83%	-421284
Asia to NEU	3263407	2749592	84%	-513815
Asia to MED	1749352	1488660	85%	-260692
Total	10909427	8920158	82%	-1989269
Oct 2022 Statistics				
Asia to TPWC	3356951	2534177	75%	-822774
Asia to TPEC	2648137	2106276	80%	-541861
Asia to NEU	3282035	2775354	85%	-506681
Asia to MED	1781126	1455109	82%	-326017
Total	11068249	8870916	80%	-2197333
Sep 2022 Statistics				
Asia to TPWC	3627848	2631338	73%	-996510
Asia to TPEC	2757529	2174952	79%	-582577
Asia to NEU	3287639	2740303	83%	-547336
Asia to MED	1831065	1487554	81%	-343511
Total	11504081	9034147	79%	-2469934
Aug 2022 Statistics				
Asia to TPWC	3726417	2900960	78%	-825457
Asia to TPEC	2743489	2375991	87%	-367498
Asia to NEU	3310069	2814242	85%	-495827
Asia to MED	1864430	1626992	87%	-237438
Total	11644405	9718185	83%	-1926220

■ Cancelled sailing list per Alliance / Trade / Week

Consortium	Trade	Carrier/ServiceCode/PortRotation	WK	WK	WK	WK	WK	WK	WK	WK	WK
			1	2	3	4	5	6	7	8	9
TPW	HPL(FP1)ONE(FP1)YML(FP1)HMM(FP1) <i>SGSIN-JPUKB-JPNGO-JPTYO-USLAX-USOAK</i>		X								
		HPL(PS3)ONE(PS3)YML(PS3)HMM(PS3) <i>INNSA-INPAV-LKCBM-MYPKG-SGSIN-VNVUT-VNHPH-CNYTN-USLAX-USOAK</i>	X	X		X				X	
	HPL(PS4)ONE(PS4)YML(PS4)HMM(PS4) <i>CNXMN-CNYTN-TWKHH-TWKEL-USLAX-USOAK</i>	X		X	X		X			X	
	HPL(PS5)ONE(PS5)YML(PS5)HMM(PS5) <i>CNSHA-CNNGB-USLAX-USOAK</i>		X		X	X	X	X	X	X	
	HPL(PS6)ONE(PS6)YML(PS6)HMM(PS6) <i>CNTAO-CNNGB-KRPUS-USLAX-USOAK</i>	X			X	X			X		X
	HPL(PS7)ONE(PS7)YML(PS7)HMM(PS7) <i>SGSIN-THLCH-VNVUT-HKHKG-CNYTN-USLGB-USOAK</i>		X		X		X				X
	HPL(PN1)ONE(PN1)YML(PN1)HMM(PN1) <i>CNXMN-TWKHH-CNNGB-JPNGO-JPTYO-USTIW-CAVAN</i>					X	X				
	HPL(PN2)ONE(PN2)YML(PN2)HMM(PN2) <i>SGSIN-THLCH-VNVUT-VNHPH-CNYTN-USTIW-CAVAN</i>	X			X		X			X	
	HPL(PN3)ONE(PN3)YML(PN3)HMM(PN3) <i>HKHKG-CNYTN-CNSHA-KRPUS-CAVAN-USTIW</i>		X		X	X	X			X	
	HPL(PN4)ONE(PN4)YML(PN4)HMM(PN4) <i>CNTAO-CNNGB-CNSHA-KRPUS-CAPRR-USTIW-CAVAN</i>		X		X		X			X	
	HPL(PS8)ONE(PS8)YML(PS8)HMM(PS8) <i>CNSHA-KRKWA-KRPUS-USLGB-USOAK</i>	X		X		X			X		X
	HPL(EC1)ONE(EC1)YML(EC1)HMM(EC1) <i>TWKHH-HKHKG-CNYTN-CNSHA-KRPUS-PAMIT-USSAV-USNCS-USNFK</i>				X	X				X	
	HPL(EC2)ONE(EC2)YML(EC2)HMM(EC2) <i>CNTAO-CNNGB-CNSHA-KRPUS-USNYK-USNFK-USWTN-USSAV-USNCS</i>	X		X	X	X			X		X
	HPL(EC4)ONE(EC4)YML(EC4)HMM(EC4) <i>TWKHH-CNYTN-VNVUT-SGSIN-USNYK-USNFK-USSAV-USNCS</i>		X		X	X			X		X
	HPL(EC5)ONE(EC5)YML(EC5)HMM(EC5) <i>THLCH-VNVUT-SGSIN-LKCBM-CAHAL-USNYK-USSAV-USJAO-USNFK</i>	X		X		X				X	
	HPL(EC6)ONE(EC6)YML(EC6)HMM(EC6)EMC(AUG) <i>TWKHH-HKHKG-CNYTN-CNNGB-CNSHA-KRPUS-USHOU-USMOB</i>					X			X		
	HPL(FP1)ONE(FP1)YML(FP1)HMM(FP1) <i>JPSMZ-JPUKB-JPNGO-JPTYO-SGSIN-NLRTM-DEHAM-FRLEH</i>	X									
	HPL(FE2)ONE(FE2)YML(FE2)HMM(FE2) <i>CNSHA-CNNGB-CNNSA-CNYTN-SGSIN-MAPTM-GBSOU-FRLEH-DEHAM-NLRTM</i>					X				X	
	HPL(FE3)ONE(FE3)YML(FE3)HMM(FE3) <i>HKHKG-CNXMN-TWKHH-CNYTN-NLRTM-DEHAM-BEANT-GBSOU</i>	X			X		X			X	
	HPL(FE4)ONE(FE4)YML(FE4)HMM(FE4) <i>CNTAO-KRPUS-CNNGB-CNSHA-CNYTN-ESALG-NLRTM-DEHAM-BEANT</i>		X		X		X				
HPL(FE5)ONE(FE5)YML(FE5)HMM(FE5) <i>THLCH-VNVUT-SGSIN-LKCBM-NLRTM-DEHAM-BEANT-GBLGP</i>				X		X			X		
HPL(MD1)ONE(MD1)YML(MD1)HMM(MD1) <i>CNTAO-KRPUS-CNSHA-CNNGB-CNSHK-SGSIN-SAJED-EGDAM-ESBAR-ESVAL-ITGOA</i>				X		X			X		
HPL(MD2)ONE(MD2)YML(MD2)HMM(MD2) <i>KRPUS-CNSHA-CNNGB-TWKHH-CNSHK-SGSIN-GRPIR-ITGOA-ITSPE-FRFSM-ESBAR</i>					X		X			X	
HPL(MD3)ONE(MD3)YML(MD3)HMM(MD3) <i>KRPUS-CNNGB-CNSHA-CNSHK-SGSIN-SAJED-ILASH-TRIST-TRIZT-TRALI-TRMER</i>	X			X		X			X		

Consortium	Trade	Carrier/ServiceCode/PortRotation	WK	WK	WK	WK	WK	WK	WK	WK	WK	
			1	2	3	4	5	6	7	8	9	
TPW		CMA(HBB)COSCO(AAC2)OOCL(PCN3)EMC(CPS) <i>CNTAO-CNSHA-CNNGB-USLAX-USOAK</i>				X						
		CMA(GEX)COSCO(AAS3)OOCL(PCS2)EMC(HTW)ONE(CP4) <i>TWTPE-CNXMN-HKHKG-CNYTN-USLAX-USOAK</i>				X	X					
		CMA(PRX)COSCO(AAS2)OOCL(PCS1)EMC(PRX)ONE(CP1) <i>CNNSA-CNYTN-CNXMN-USLAX</i>			X	X	X					
		CMA(SCS)COSCO(SEA)OOCL(PVCS)EMC(PVCS)ONE(CP2) <i>VNVUT-CNNSA-HKHKG-CNYTN-TWKHH-USLGB</i>				X						
		CMA(YANGTSE)COSCO(AAC)OOCL(VCS)EMC(SEA)ONE(CP3) <i>VNVUT-VNHPH-CNXMN-CNNGB-USLGB</i>			X	X	X		X			
		CMA(JDX)COSCO(AAS4)EMC(TPA) <i>HKHKG-TWKHH-TWTPE-USLAX-USTIW</i>		X		X						
		CMA(BOHAI)COSCO(CEN)OOCL(PCN1)EMC(CEN)YML(CEN) <i>CNTXG-CNTAO-CNSHA-USLGB-CAPRR</i>	X			X	X	X				
		CMA(TWPKS)COSCO(CPNW)OOCL(PNW4)EMC(PE2) <i>HKHKG-CNYTN-CNNGB-CNSHA-CAPRR-CAVAN</i>	X			X						
		CMA(NWX)COSCO(EPNW)OOCL(PNW3)EMC(TPN) <i>CNTAO-CNSHA-CNNGB-TWKHH-CNYTN-USTIW-CAVAN</i>				X	X					
		CMA(DAH)COSCO(OPNW)OOCL(PNW1)EMC(PNW1) <i>HKHKG-CNYTN-TWKHH-CAVAN-USSEA</i>	X	X					X			
		CMA(CJX)COSCO(SEA2)OOCL(SEAP)EMC(PE1) <i>MYPKG-SGSIN-THLCH-VNVUT-CNYTN-USLAX-USOAK</i>				X						
	TPE		CMA(MANB)COSCO(AWE2)OOCL(EXC2)EMC(NUE2) <i>CNTAO-CNNGB-CNSHA-KRPUS-USNYK-USNFK-USSAV</i>				X	X				
			CMA(SAX)COSCO(AWE4)OOCL(EXC1)EMC(SAX) <i>HKHKG-CNYTN-CNXMN-CNSHA-PAONX-USNYK-USSAV-USNCS</i>		X		X					
			CMA(GMXP)COSCO(GME)OOCL(GCC2)EMC(GME) <i>CNSHA-CNNGB-CNXMN-CNYTN-PAMIT-USHOU-USMOB-USTAM</i>				X	X				
			CMA(VEPUCCI)COSCO(AWE1)OOCL(ECC2)EMC(NUE) <i>CNTAO-CNSHA-CNNGB-PAONX-USSAV-USNCS-USBOS-USNYK</i>			X	X	X				
			CMA(PEX3)COSCO(GME2)OOCL(GCC1)EMC(PEX3) <i>SGSIN-VNVUT-HKHKG-CNSHK-CNNGB-CNSHA-KRPUS-USHOU-USMSY-USMOB</i>			X	X			X		
			CMA(TWS)COSCO(AWE3)OOCL(ECC1)EMC(AUE) <i>CNXMN-TWKHH-HKHKG-CNYTN-PAONX-USSAV-USNYK-USNFK-USBAL</i>				X					
			CMA(CBX)COSCO(AWE7)OOCL(ECC3)EMC(CBX) <i>SGSIN-THLCH-CNYTN-CNNGB-CNSHA-KRPUS-USNFK-USSAV-USNCS-USMIA</i>	X	X	X	X	X	X	X		X
		CMA(FAL2)COSCO(AEU3)OOCL(LL2)EMC(NE3) <i>CNTXG-CNDAL-CNTAO-CNSHA-CNNGB-SGSIN-GRPIR-NLRMT-DEHAM-BEANT</i>				X						
		CMA(FAL7)COSCO(AEU7)OOCL(LL3)EMC(NE7) <i>CNXMN-CNNSA-HKHKG-CNYTN-VNVUT-SGSIN-GRPIR-DEHAM-NLRMT-BEZEE-ESVAL</i>	X			X	X		X			
		CMA(FAL1)COSCO(AEU2)OOCL(LL4)EMC(FAL1) <i>KRPUS-CNNGB-CNSHA-CNYTN-SGSIN-FRLEH-FRDUN-DEHAM-NLRMT</i>				X						
		CMA(FAL3)COSCO(AEU6)OOCL(LL5)EMC(FAL3) <i>CNTAO-CNNGB-CNSHA-CNYTN-SGSIN-MAPTM-NLRMT-GBSOU-BEANT-FRLEH</i>				X						
		CMA(FAL5)COSCO(AEU1)OOCL(LL1)EMC(NE1) <i>CNSHA-CNNGB-CNXMN-CNYTN-SGSIN-GBFEL-BEZEE-PLGDN-DEWIL</i>					X			X		
		CMA(FAL8)COSCO(AEU9)OOCL(LL7)EMC(CES) <i>CNTXG-CNNGB-CNSHA-SGSIN-GRPIR-BEANT-DEHAM-NLRMT</i>				X		X				
MED			CMA(NEWMEX2S)COSCO(AEM1)OOCL(WM1)EMC(MD2) <i>CNTAO-CNSHA-CNNGB-TWKHH-HKHKG-CNYTN-SGSIN-GRPIR-ITSPE-ITGOA-FRFSM-ESVAL</i>						X	X		
			CMA(BEX)COSCO(AEM3)OOCL(EM1)EMC(BEX) <i>KRPUS-CNSHA-CNNGB-CNXMN-CNSHK-SGSIN-EGPSD-LBBEY-LBKYE-TRIZT-TRIST-ROCND-UAODS</i>		X		X					
			CMA(MEX)COSCO(AEM2)OOCL(WM2)EMC(MEX1) <i>CNTAO-KRPUS-CNSHA-CNNGB-CNNSA-CNSHK-SGSIN-MTDIS-ESVAL-ESBAR-FRFSM-ITGOA</i>				X					
			CMA(BEX2)COSCO(AEM6)OOCL(AAS)EMC(BEX2) <i>CNSHA-CNNGB-KRPUS-CNSHK-SGSIN-MTDIS-SIKOP-ITTRI-HRRJK</i>				X					

Consortium	Trade	Carrier/ServiceCode/PortRotation	WK	WK	WK	WK	WK	WK	WK	WK	WK	
			1	2	3	4	5	6	7	8	9	
2M	TPW	MSK(TP2)HSD(UPAS 2)MSC(JAGUAR) <i>CNSHK-CNNSA-CNYTN-CNNGB-CNSHA-USLGB</i>			X	X	X					
		MSK(TP6)HSD(UPAS 3)MSC(PEARL) <i>VNVUT-HKHKG-CNYTN-CNXMN-USLAX</i>		X		X	X	X				
		MSK(TP8)HSD(UPAS 1)MSC(ORIENT) <i>CNTAO-CNSHA-CNNGB-KRPUS-USLGB-USOAK</i>			X		X		X			
		MSK(TP1)HSD(UPAS5)MSC(MAPLE) <i>CNXMN-CNYTN-CNNGB-CNSHA-KRPUS-JPYOK-CAPRR-CAVAN</i>			X		X	X				
		MSK(TP10)HSD(ASUS1)MSC(AMBERJACK)ZIM(ZCP) <i>CNTAO-CNNGB-CNSHA-KRPUS-JMKIN-USSAV-USNCS-USWTN-USJAO</i>					X	X				
	TPE	MSK(TP17)HSD(ASUS5)MSC(AMERICA)ZIM(Z7S) <i>HKHKG-CNNSA-CNYTN-VNVUT-SGSIN-USNYK-USSAV-USMIA-BSFPO</i>				X						
		MSK(TP12)HSD(ASUS2)MSC(EMPIRE)ZIM(ZBA) <i>CNYTN-CNXMN-CNNGB-CNSHA-KRPUS-USNYK-USNFK-USBAL</i>			X		X	X				
		MSK(TP16)HSD(ASUS3)MSC(EMERALD)ZIM(ZSA) <i>CNXMN-CNYTN-CNSHA-KRPUS-USSAV-USNFK-USNYK</i>							X			
		MSK(TP18)HSD(ASUS4)MSC(LONE STAR)ZIM(ZGC) <i>CNNGB-CNSHA-KRPUS-USMOB-USHOU-USMSY-USMIA-BSFPO</i>					X		X			
		MSK(TP11)HSD(ASUS7)MSC(ELEPHANT)ZIM(ZNF) <i>THLCH-SGSIN-MYTPP-LKCM-B-OMSL-LL-USNYK-USNFK-USSAV</i>			X			X				
NEU	MSK(TP88)HSD(ASUS6)MSC(PELICAN)ZIM(ZGX) <i>CNXMN-CNYTN-KRPUS-USHOU-USMOB-USTAM</i>					X						
	MSK(AE1)HSD(NERA1)MSC(SHOGUN) <i>-CNXMN-CNYTN-MYTPP-NLR-TM-DEBHCNNGB</i>	X	X	X	X	X	X					
	MSK(AE6)HSD(NERA3)MSC(LION) <i>CNNGB-CNSHA-CNYTN-MYTPP-PTSIE-BEANT-GBFEL</i>			X					X			
	MSK(AE7)HSD(NERA4)MSC(CONDOR) <i>CNNGB-CNSHA-CNNSA-CNYTN-MYTPP-LKCM-B-MAP-TM-GBFEL-DEHAM-BEANT-GBLGP-FRLEH</i>			X		X						
	MSK(AE55)HSD(NERA2)MSC(GRIFFIN) <i>CNSHA-CNNGB-MYTPP-GBFEL-FRLEH</i>				X	X	X	X				
	MSK(AE12)HSD(SERA4)MSC(PHOENIX) <i>CNTXG-CNDAL-KRPUS-CNNGB-CNSHA-CNSHK-SGSIN-EGPSD-ILHFA-SIKOP-ITTRI-HRRJK</i>			X								
	MSK(AE15)HSD(SERA3)MSC(TIGER) <i>KRPUS-CNSHA-CNNGB-CNSHK-SGSIN-SAKAC-EGPSD-GRPIR-TRIZT-TRIST-TRTEK</i>					X						

Consortium	Trade	Carrier/ServiceCode/PortRotation	WK	WK	WK	WK	WK	WK	WK	WK	WK
			1	2	3	4	5	6	7	8	9
TPW	SML(CPX)				X						
	<i>CNTAO-CNNGB-CNSHA-KRPUS-USLGB</i>										
	SML(PNS)		X		X						
	<i>CNYTN-CNSHA-CNNGB-KRPUS-CAPRR-CAVAN-USSEA-USPDX</i>										
	CMA(EX1)		X		X						
	<i>CNTAO-CNSHA-KRPUS-USLAX-USOAK</i>										
	CMA(EXX)				X	X			X		
	<i>CNYTN-CNNGB-CNSHA-USLAX-USOAK-USHNL</i>										
	ZIM(ZEX)			X	X	X					
	<i>CNNGB-CNXMN-CNYTN-USLAX</i>										
	Matson(CLX+)				X	X	X				
	<i>CNNGB-CNSHA-USLGB</i>										
	MSC(CHINOOK)				X						
	<i>CNYTN-CNSHA-CNTAO-KRPUS-USSEA-CAVAN-USPDX</i>										
	WHL(AA3)			X	X	X	X		X		
	<i>VNHPH-VNVUT-CNSHK-HKHKG-CNXMN-TWTPE-USLGB-USOAK</i>										
	WHL(AA5)		X	X	X	X			X		
	<i>CNTAO-CNSHA-CNNGB-USLGB-USSEA</i>										
	MSC(SENTOSA)						X				
	<i>MYPKG-SGSIN-MYTPP-THLCH-VNVUT-CNDCB-CNSHK-USLGB-USOAK</i>										
ZIM(ZNP)		X	X		X	X	X				
<i>TWKHH-CNYTN-CNNGB-CNSHA-KRPUS-CAVAN</i>											
CMA(INDAMEX)COSCO(IPE)HPL(INDAMEX)ONE(IE)OOCL(IE)						X					
<i>PKBQM-INNSA-INMUN-EGDAM-USNYK-USNFK-USSAV-USNCS</i>											
WHL(AA7)HPL(AA7)				X	X						
<i>CNNGB-TWTPE-CNXMN-CNSHK-VNVUT-SGSIN-USNYK-USNFK-USSAV</i>											
MSK(TP20)HSD(ASUS20)					X						
<i>IDJKT-VNVUT-CNSHA-CNNGB-KRPUS-USMOB-USNYK</i>											
MSC(SANTANA)						X					
<i>VNHPH-CNDCB-CNSHA-KRPUS-USNCS-USBAL-USNYK-USBOS</i>											
HPL(IN2)CMA(INDAMEX2)				X							
<i>PKBQM-INMUN-INNSA-USNFK-USSAV-USNYK</i>											
WHL(AA9)		X	X	X							
<i>VNHPH-CNSHK-TWKHH-CNSHA-USNCS-USPHL-USNYK</i>											
ZIM(ZXB)		X	X	X	X	X					
<i>TWKHH-CNYTN-VNVUT-USBAL-USNYK-USBOS</i>											
COSCO(AWES)OOCL(ISE)				X				X			
<i>VNVUT-THLCH-SGSIN-INMUN-USNYK-USNFK-USBOS</i>											
ZIM(ZMI)			X								
<i>INMUN-INNSA-LKCMB-ILHFA-TRMER-ESVAL-GBFEL-NLRM-DEHAM-BEANT-FRLEH</i>											
ZIM(ZMP)					X						
<i>KRPUS-CNTAO-CNNGB-CNSHA-CNDCB-MYPKG-ILHFA-ILASH-TRIST-TRIZT</i>											
MSK(ME4)						X					
<i>QAHMD-AEJEA-OMSL- SAKAC-MAPTM</i>											
MSC(INWMED)				X							
<i>AEAUH-AEJEA-INNSA-INMUN-ITGIT-ITGOA-ESBAR-ESVAL-ITSAL</i>											
MED											